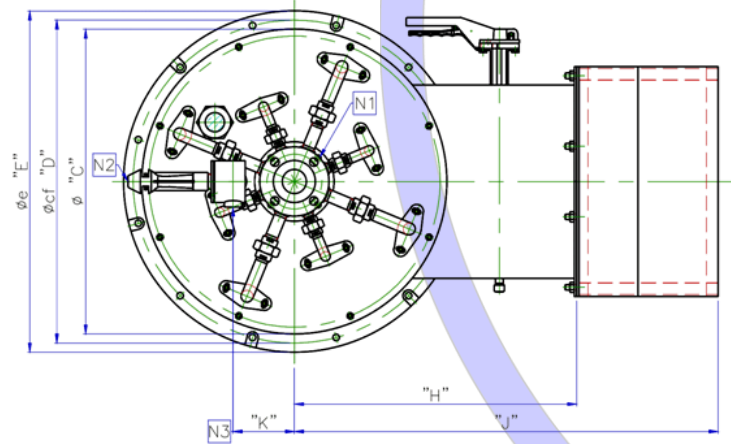
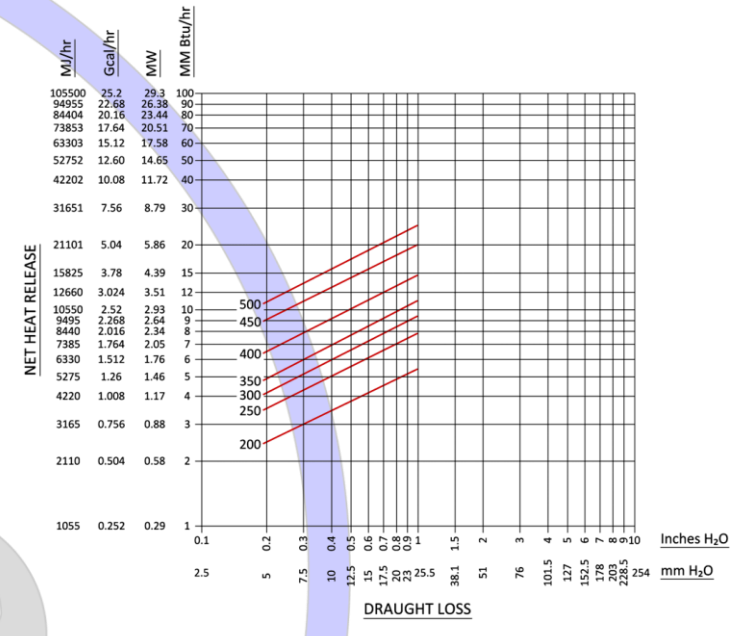
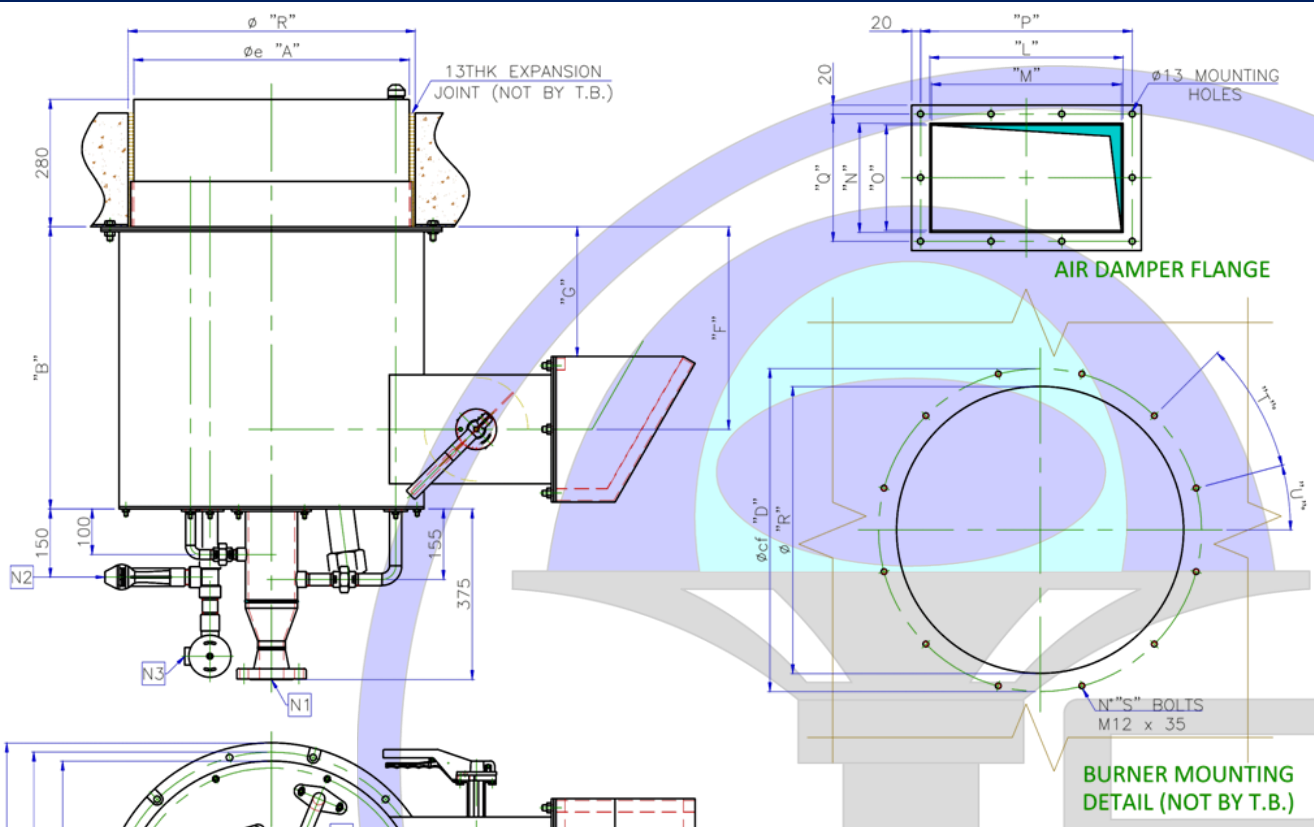




Natural Draft Burner – Gas Only
Ultra Low NOx

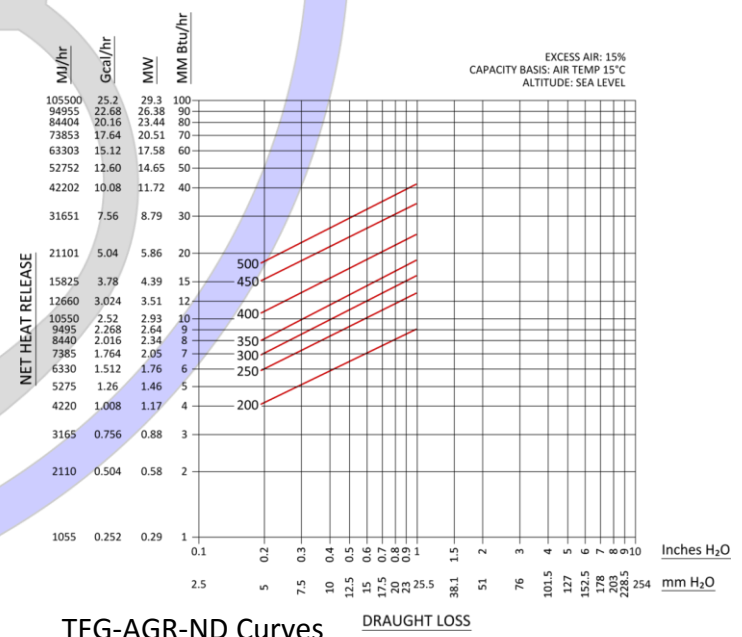
TFG-AGS-ND



SIZE	"A"	"B"	"C"	"D"	"E"	"F"	"G"	"H"	"J"	"K"
200	550	605	645	685	725	425	260	610	936	135
250	605	620	670	710	750	445	>285	620	931	135
300	630	655	695	735	775	460	>285	650	1001	140
350	655	705	720	760	800	485	>285	690	1096	150
400	705	780	770	810	850	525	>285	670	1156	175
450	755	860	820	860	900	565	>285	715	1286	200
500	810	910	875	915	955	590	>285	750	1361	225

SIZE	"L"	"M"	"N"	"O"	"P"	"Q"	"R"	"S"	"T"	"U"
200	410	402	250	242	3 Sp. at 150=450	2 Sp. at 145=290	576	12	30	15
250	425	417	240	232	3 Sp. at 155=465	2 Sp. at 140=280	631	12	30	15
300	470	462	270	262	4 Sp. at 127.5=510	2 Sp. at 155=310	656	12	30	15
350	515	507	320	312	4 Sp. at 140=560	3 Sp. at 120=360	681	12	30	15
400	585	577	390	382	4 Sp. at 157.5=630	3 Sp. at 145=435	731	16	22.5	11.25
450	655	647	460	452	5 Sp. at 139=695	4 Sp. at 125=500	781	16	22.5	11.25
500	740	732	490	482	5 Sp. at 156=780	4 Sp. at 135=540	836	16	22.5	11.25

NOZZLE LEGEND			
ITEM	Q.TY	DESCRIPTION	CONNECTION
N1	1	FUEL GAS INLET FLANGE	ø2" 150# W.N. R.F.
N2	1	PILOT GAS INLET CONN.	ø½" NPT FEMALE
N3	1	ELECTRICAL SPARK PLUG CONN.	ø1" GAS FEMALE



TFG-AGR-ND Curves
Flue Gas Recirculation Burner