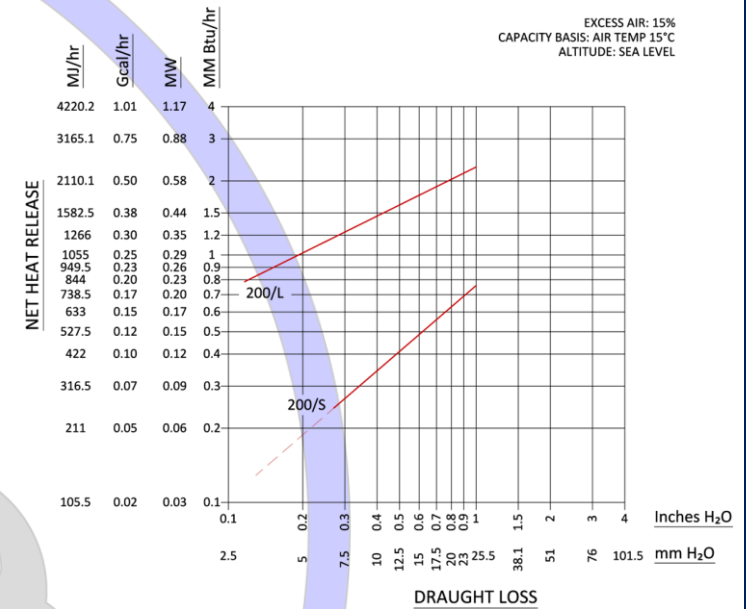
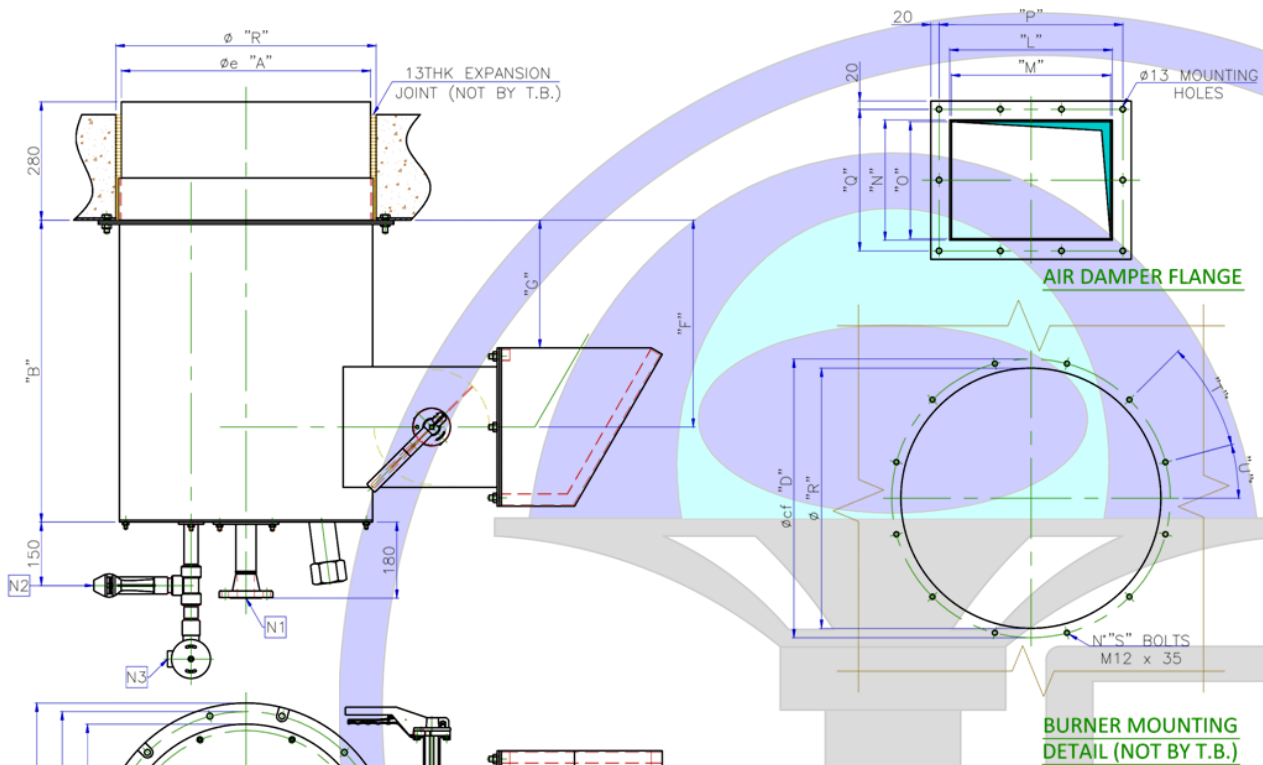




Natural Draft Burner – Gas Only  
Low Nox

# TFG-AS-ND



EXCESS AIR: 15%  
CAPACITY BASIS: AIR TEMP 15°C  
ALTITUDE: SEA LEVEL

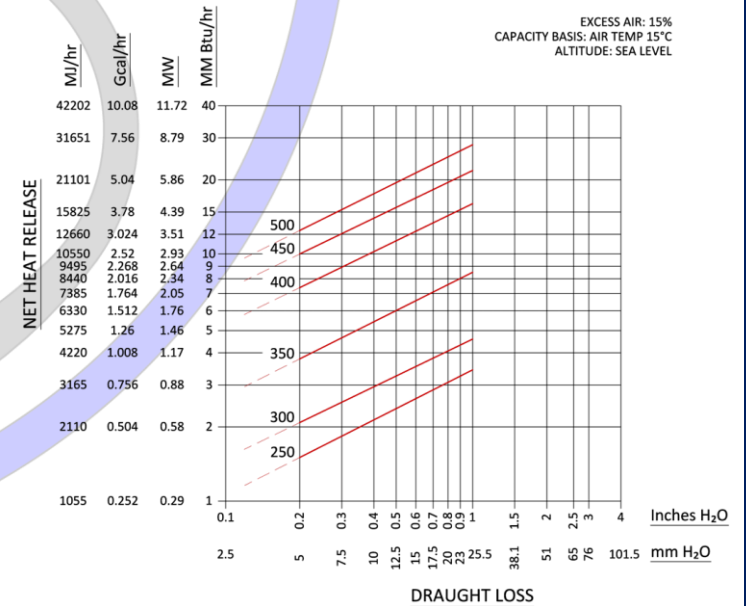
BURNER MOUNTING  
DETAIL (NOT BY T.B.)

## DIMENSION LIST

SIZE	"A"	"B"	"C"	"D"	"E"	"F"	"G"	"H"	"J"	"K"
250	590	715	600	660	700	490	>285	600	986	130
300	640	715	650	710	750	490	>285	600	986	130
350	690	750	700	760	800	505	>285	650	1050	130
400	740	890	750	810	850	575	>285	630	1196	130
450	790	965	810	860	900	615	>285	675	1361	170
500	860	970	880	930	970	615	>285	675	1361	170

SIZE	"L"	"M"	"N"	"O"	"P"	"Q"	"R"	"S"	"T"	"U"
250	385	377	285	277	3 Sp. at 145=435	2 Sp. at 167.5=335	616	12	30	15
300	385	377	285	277	3 Sp. at 145=435	2 Sp. at 167.5=335	666	12	30	15
350	475	467	320	312	3 Sp. at 175=525	2 Sp. at 180=360	716	12	30	15
400	485	477	460	452	3 Sp. at 175=525	3 Sp. at 170=510	766	16	22.5	11.25
450	535	527	535	527	4 Sp. at 145=580	4 Sp. at 145=580	816	16	22.5	11.25
500	545	537	535	527	4 Sp. at 145=580	4 Sp. at 145=580	886	16	22.5	11.25



EXCESS AIR: 15%  
CAPACITY BASIS: AIR TEMP 15°C  
ALTITUDE: SEA LEVEL

## NOZZLE LEGEND

ITEM	Q.TY	DESCRIPTION	CONNECTION
N1	1	FUEL GAS INLET FLANGE	Ø "Z" 150# W.N. R.F.
N2	1	PILOT GAS INLET CONN.	Ø½" NPT FEMALE
N3	1	ELECTRICAL SPARK PLUG CONN.	Ø1" GAS FEMALE

SIZE	250	300	350	400	450	500
"Z"	1½"	1½"	2"	2"	3"	3"