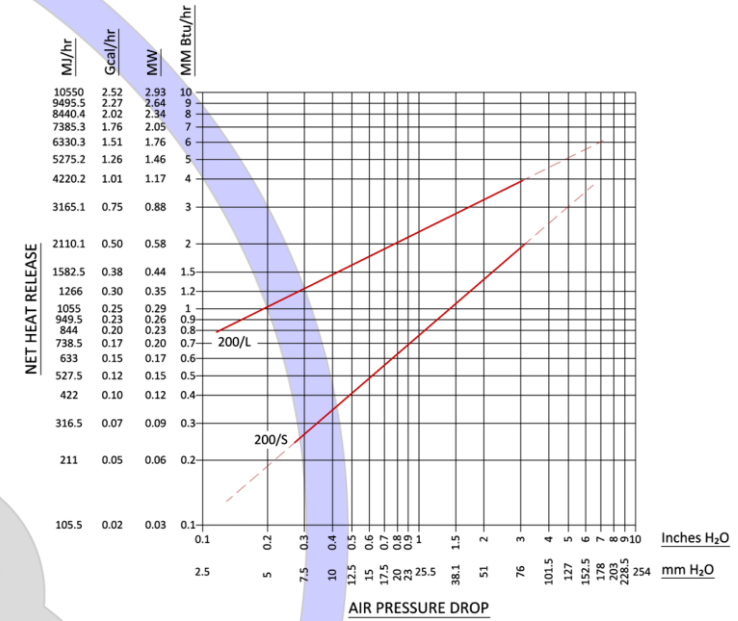
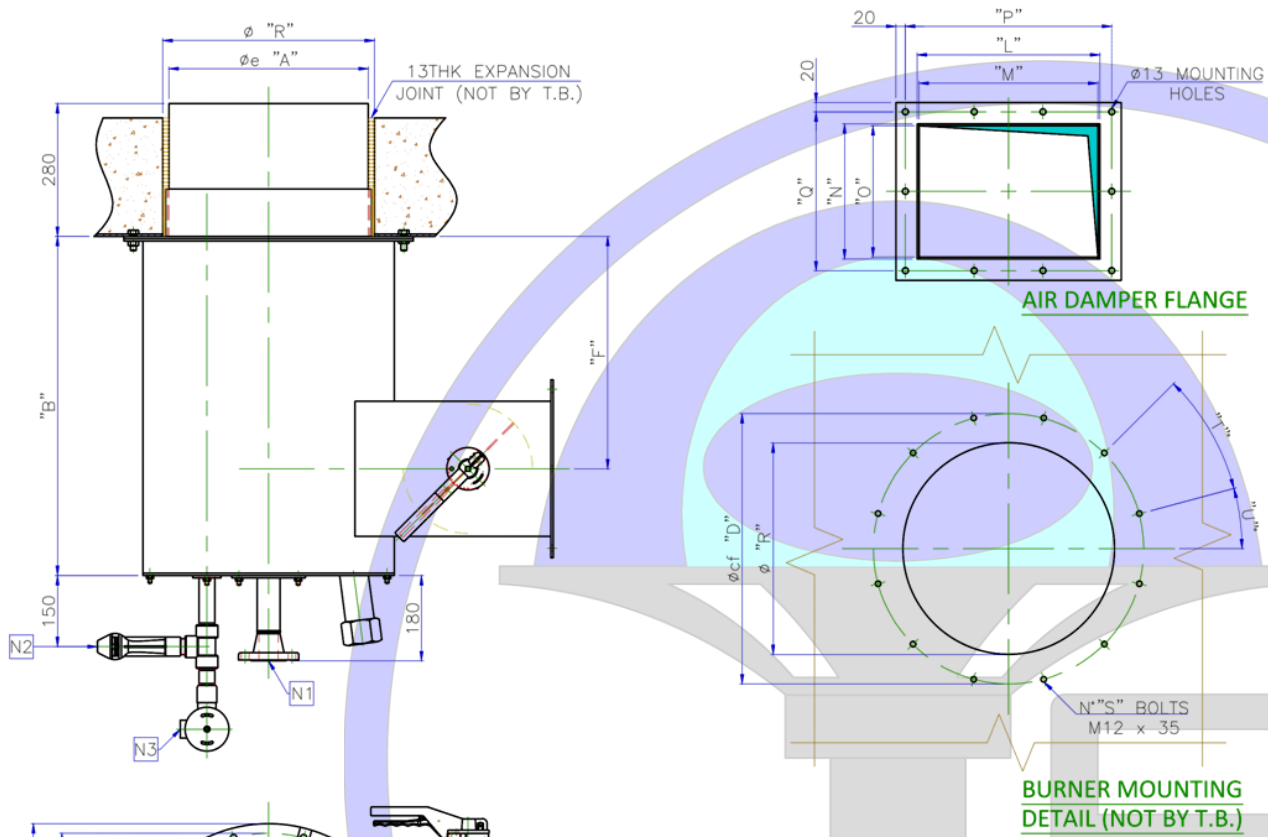




Forced Draft Burner – Gas Only

TFG-STD-FD



DIMENSION LIST

SIZE	"A"	"B"	"C"	"D"	"E"	"F"	"H"	"K"	"L"
250	420	715	530	570	610	490	600	130	385
300	470	715	530	570	610	490	600	130	385
350	520	750	620	660	700	505	600	130	475
400	570	890	635	675	715	575	630	130	485
450	620	965	685	725	765	615	675	170	535
500	670	970	685	735	775	615	675	170	545

SIZE	"M"	"N"	"O"	"P"	"Q"	"R"	"S"	"T"	"U"
250	377	285	277	3 Sp. at 145=435 2 Sp. at 167.5=335	446	12	30	15	
300	377	285	277	3 Sp. at 145=435 2 Sp. at 167.5=335	496	12	30	15	
350	467	320	312	3 Sp. at 175=525 2 Sp. at 180=360	546	12	30	15	
400	477	460	452	3 Sp. at 175=525 3 Sp. at 170=510	596	16	22.5	11.25	
450	527	535	527	4 Sp. at 145=580 4 Sp. at 145=580	646	16	22.5	11.25	
500	537	535	527	4 Sp. at 145=580 4 Sp. at 145=580	696	16	22.5	11.25	

NOZZLE LEGEND

ITEM	Q.TY	DESCRIPTION	CONNECTION
N1	1	FUEL GAS INLET FLANGE	Ø "Z" 150# W.N. R.F.
N2	1	PILOT GAS INLET CONN.	Ø½" NPT FEMALE
N3	1	ELECTRICAL SPARK PLUG CONN.	Ø1" GAS FEMALE

SIZE	250	300	350	400	450	500
"Z"	1½"	1½"	2"	2"	3"	3"

