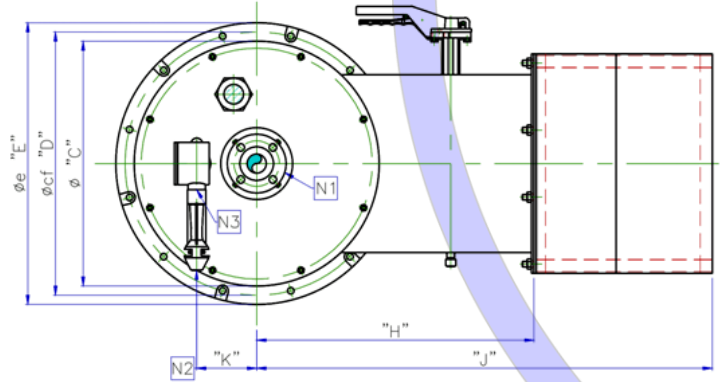
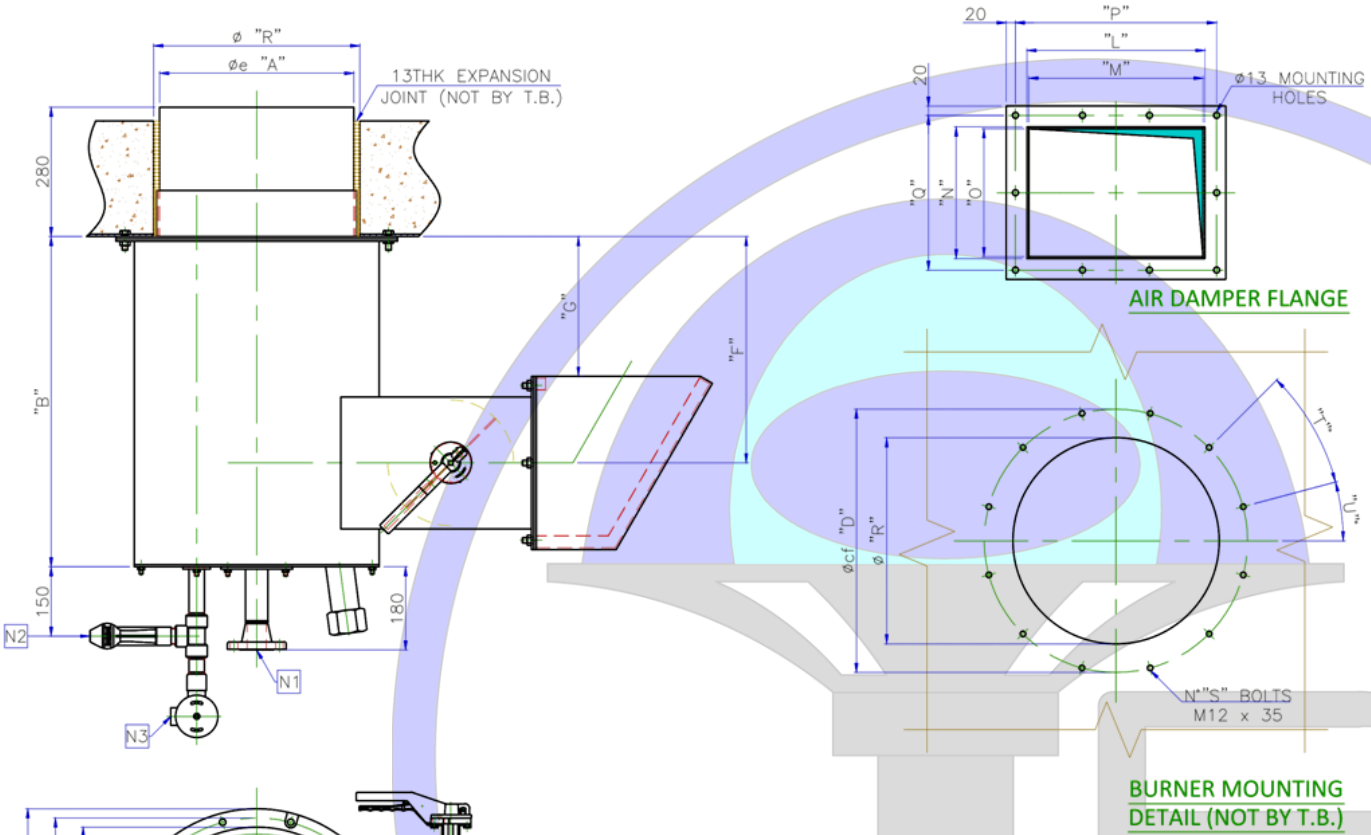




Natural Draft Burner – Gas Only

TFG-STD-ND



NOZZLE LEGEND						
ITEM	Q.TY	DESCRIPTION			CONNECTION	
N1	1	FUEL GAS INLET FLANGE			Ø "Z" 150# W.N. R.F.	
N2	1	PILOT GAS INLET CONN.			Ø½" NPT FEMALE	
N3	1	ELECTRICAL SPARK PLUG CONN.			Ø1" GAS FEMALE	
SIZE	250	300	350	400	450	500
"Z"	1½"	1½"	2"	2"	3"	3"

DIMENSION LIST										
SIZE	"A"	"B"	"C"	"D"	"E"	"F"	"G"	"H"	"J"	"K"
250	420	715	530	570	610	490	>285	600	986	130
300	470	715	530	570	610	490	>285	600	986	130
350	520	750	620	660	700	505	>285	600	1000	130
400	570	890	635	675	715	575	>285	630	1196	130
450	620	965	685	725	765	615	>285	675	1361	170
500	670	970	685	735	775	615	>285	675	1361	170
SIZE	"L"	"M"	"N"	"O"	"P"	"Q"	"R"	"S"	"T"	"U"
250	385	377	285	277	3 Sp. at 145=435	2 Sp. at 167.5=335	446	12	30	15
300	385	377	285	277	3 Sp. at 145=435	2 Sp. at 167.5=335	496	12	30	15
350	475	467	320	312	3 Sp. at 175=525	2 Sp. at 180=360	546	12	30	15
400	485	477	460	452	3 Sp. at 175=525	3 Sp. at 170=510	596	16	22.5	11.25
450	535	527	535	527	4 Sp. at 145=580	4 Sp. at 145=580	646	16	22.5	11.25
500	545	537	535	527	4 Sp. at 145=580	4 Sp. at 145=580	696	16	22.5	11.25

